



**WHEN THERE'S NO ROOM FOR ERROR.
WHEN EVERY MINUTE COUNTS.
WE'RE READY TO SERVE.**

Depend on us to provide a solid foundation for your temporary space.



CONTENTS

<u>Introduction</u>	03
<u>Our Military and Humanitarian solutions</u>	05
<u>Flooring and Trackway</u>	07
• <u>Solutions</u>	08
• <u>Features and benefits</u>	09
• <u>Products information and specifications</u>	10
<u>Off-Grid Modular Power Generation</u>	13
• <u>Solutions</u>	14
• <u>Features and benefits</u>	15
<u>Thermal Acoustic and Fragmentation Barrier solutions</u>	16
• <u>Solutions</u>	17
• <u>Features and benefits</u>	18
<u>Our Support and Proposal Example</u>	20
• <u>A Winter Military Challenge</u>	21
• <u>Proposed products</u>	22
• <u>Product information and specifications</u>	23
<u>Project management</u>	32
<u>About us</u>	34
<u>Case studies</u>	38

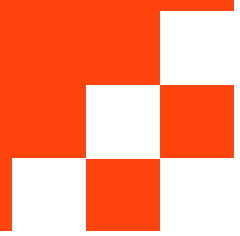


ANY CHALLENGE.

ANYWHERE.

FAST

INTRODUCTION



ENABLING TEMPORARY SPACES IN DIFFICULT & DANGEROUS PLACES SINCE 1999

We know the integrity of your temporary operating environment is critical to your mission success.

Get it right, and your project can align and succeed. Get it wrong and delays accumulate, vital deadlines are missed and outcomes fall short of the required standard. Or can even be catastrophic.

At The Box Group we enable the creation of dependable temporary spaces in the most demanding situations.

Our solutions are much more than the provision of the right kit; they combine our experience with inventive thinking, sustainability and a can do, positive mindset.

So you can meet each logistical challenge, enable operations and successfully complete every task, from the ground, up.



WE GO IN WITH YOU AT
BASE LEVEL, TO **DELIVER**
THE FOUNDATIONS YOU
NEED TO GET
OPERATIONAL.





**ACCESS IT,
POWER IT,
PROTECT IT**

**SOLUTIONS
MILITARY + HUMANITARIAN**

WE BACK **MILITARY** **FORCES AND AID** **AGENCIES AROUND** **THE WORLD**

Our expertise and equipment helps to create safe and effective operational spaces in the most hostile and remote environments.

For over two decades, we've been a trusted supplier to the UK Ministry of Defence, and we're proud to serve as NSPA NATO and Level 2 UN suppliers.

Our expertise speaks for itself:

- Five helipads set for deployment in Africa – early 2025
- 44,000m² of heavy-duty load-bearing panels (**Stadia XHD**/AMP) for critical military & humanitarian missions – mid 2025
- 100,000m²+ of high-quality equipment supplied worldwide.

In high-stakes scenarios and testing timescales, we can deliver:

- Demountable sound and thermal suppression screens with built-in fragmentation protection
- Military grade flooring and trackway
- Flexible off-grid power from our autonomous, micro turbine generators

All our solutions are tough, reliable, flexible, man-handlable, quiet and secure.





FLOORING + TRACKWAY

SOLUTIONS
MILITARY + HUMANITARIAN

BUILT FOR **RAPID** DEPLOYMENT



CASE STUDY:

RAISING THE ROOF FOR A HISTORIC

HEAVYWEIGHT TITLE FIGHT

[>> WATCH THE VIDEO](#)

Tough and flexible temporary surface equipment to meet operational requirements up to a **12.5 tonne axle limit**.

Assists the swift deployment of air and ground forces and relief operations in hostile or heavily-damaged environments. Man-handlable and designed for rapid installation and easy transportation and removal.

Typical applications include:

- Flooring for HQ, camp accommodation, field hospitals
- Food prep or workshop areas
- Temporary roadways and walkways to facilitate safe travel across difficult terrain
- Sturdy foundation for blast walls and security perimeters
- Hard-standing, landing and take-off points for helicopters and fixed-wing aircraft.



FEATURES + BENEFITS



Secure and stable

Helps you gain access and create a solid, reliable foundation.



Lightweight and demountable

Easy to transport, set up and take down without the need for specialists. You only need panels for the area you're working on – our panels are easy to move around with your job.



Modular panels and decking

Create the operating accommodation you need and connect units with roadway and trackway tailored to your use and load. Save cost by focusing the most expensive panels for only the heaviest use.



Easy-to-clean surfaces

Maintain a good, safe working environment with these easy-to-clean and spill resistant panels.



Built-in cable storage and management

The easy way to keep your operating areas uncluttered and safe.

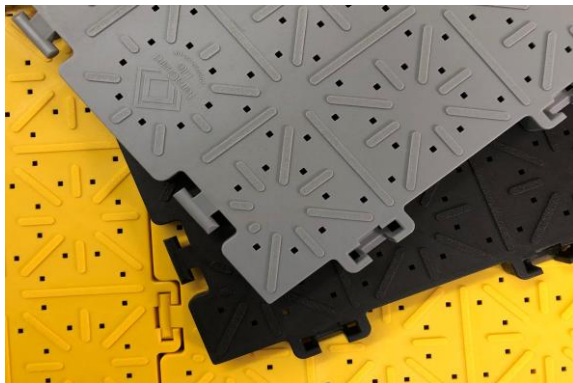


Sustainable

Recyclable flooring to reduce environmental impact. In some cases, we can buy back your used flooring and recycle it/dispose of it sustainably, helping you reduce overall costs.

STADIA X LITE

Stadia X Lite temporary flooring is unique, incredibly durable and flexible, creating a firm surface for walkways, temporary buildings and structures.



Stadia X Lite can withstand up to 30,000 Kg load per m2 whilst still retaining an easy implementation system that requires no tools or training.

Built to contend with the toughest conditions

Stadia X- lite is the smart, reusable choice that comes with all the additional edging, cable covers, and ramps needed for your installation. With a multi-directional anti-slip surface making this one of the safest flooring solutions available today.



Easy to use – with little effort

Stadia X- lite was developed by industry specialists who understand that temporary flooring must perform quickly and with zero complications. Designed to be implemented with minimum manpower and no tools, the T-peg system allows for rapid deployment.

Material: PPCP

Ambient Temperature range: -49 – +50 deg C

Panel size: 287.5mm x 287.5mm

Max Gross vehicle weight: 2,000kg*

Sheet Size: 1.15m x 0.8625m
1.15m x 1.15m
or 2.3m x 1.15m

Max Static Load: Up to 80,000kg per m2

Panel thickness: 18mm

Operating Parameters:

Panel weight: 325g (3.95kg per m2)

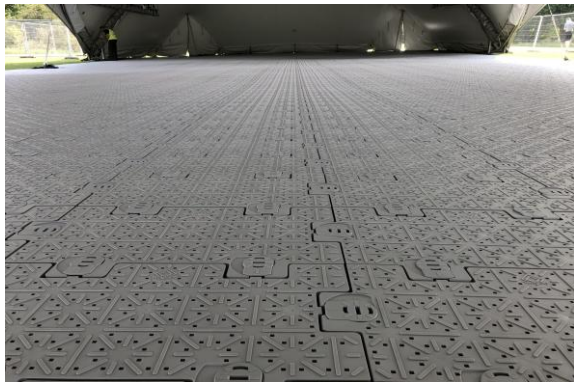
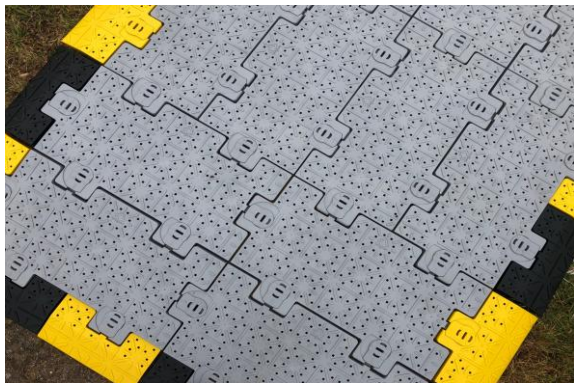
- Self-draining, inert and non-conductive.
- Multi Directional Anti slip surface.
- Resistant to solvents and non-corroding.
- Resistant to UV damage.
- Manually deployed and can be laid in straight runs or pads.
- Deployment of up to 70m2 per hour per person.

Suitable Surfaces: Turf, soil, sand, gravel, snow, grass.

STADIA X



A true all-rounder in the world of medium-duty flooring systems, Stadia X offers resilience and versatility, in a wide range of different applications.



Stadia X not only provides excellent ground protection for pedestrian access, it is also the first product that can accommodate moving vehicles with an axle weight of up to 2.5 tonnes.

Ground-dependent, Stadia X can also withstand a high level of static loading - approximately 70 tonnes per m2. It's load-bearing capacity means Stadia X can also be considered for uses such as Heli-pads or car parks

Stadia X is ventilated to allow light air and water to penetrate through and promote grass growth. Stadia X can also be installed within temporary structures to enable staff working environments or comfortable accommodation areas.

Fast assembly and breakdown

Developed with the user in mind, making it one of the most straightforward temporary flooring systems available. The “T-peg” design and the unique integrated cam locks allow rapid deployment, with the minimum of manpower and no specialist tools. The multi-directional anti-slip surface makes Stadia X one of the safest temporary flooring solutions available.

Material: PPCP

Panel size: 570mm x 285mm

Sheet Size: 2.3m x 1.15m
or 1.15m x 1.15m

Panel thickness: 30mm

Panel weight: 1330g (8.19kg per m2)

Suitable Surfaces: Turf, soil, sand, gravel, snow, grass.

Ambient Temperature range: -49 – +50 deg C

Max Gross vehicle weight: 2,500kg*

Max Static Load: Up to 80,000kg per m2

Operating Parameters:

- Self-draining, inert and non-conductive.
- Full Multi-Directional Anti-slip surface.
- Resistant to solvents and non-corroding.
- Resistant to UV damage.
- Manually deployed and can be laid in straight runs or pads.
- Deployment of up to 70m2 per hour per man. *Ground Dependent

STADIA XHD

Stadia XHD and Stadia XHD-XL are innovative, self-locking, modular road systems designed for heavy-duty temporary access.



DESCRIPTION:

Stadia XHD is an innovative, self-locking, modular road system with sixteen 5mm internal supporting up-rights incorporated into each panel for heavy-duty temporary access. It is entirely composite made from polypropylene or HDPE.

The Stadia XHD-XL variant is a hybrid version incorporating patented aluminium box beams for higher rated performance. It offers the strength of a heavy-duty system with the portability of track mats. [\[Watch video\]](#)

Both systems are ideal for protecting sensitive surfaces and providing access for heavy vehicles and rotary-wing aircraft.



KEY FEATURES:

- **Heavy-duty:** Both systems support axle weights up to 12.5 tonnes and static loads up to 150 tonnes per m² (ground-dependent) for XHD and 180 tonnes for the hybrid XHD-XL variant.
- **Self-locking:** The built-in mechanism eliminates the need for additional locking or tools, enhancing safety and ease of use (no nuts bolts cam locks, or keys).
- **Rapid deployment:** XHD is man-handlable and can be deployed at 55m² per man per hour over a period of time.
- **Efficient transport:** 52 panels per pallet, 1200m² per 40ft truck / Hi Cube container.
- **Low theft risk:** XHD-XL has no visible aluminium as it is enclosed within the panel, reducing its attractiveness to thieves.
- **Sustainable:** PPC recyclable, XHD-XL aluminium recyclable.

APPLICATIONS:

- Professional sports stadiums & athletics tracks
- Military operations and helipads
- Construction sites
- Temporary roadways / access routes
- Event flooring
- Any application requiring heavy-duty temporary access over sensitive surfaces

Material - XHD: PPCP + UV
XHD-XL: PPCP + UV + Anti-Static Aluminium box beam inserts (patent applied)

Ambient Temperature range: -30 to +50 °C

Panel size: Full Panel: 2800mm x 500mm
 2000mm x 500mm
 Half Panel: 1400mm x 500mm
 1000mm x 500mm

Max Gross vehicle weight: 12,500 kg per axle, (CBR 3>)*

Max Static Load: Up to 150,000 to 180,000 kg per m²

Panel thickness: 50 mm

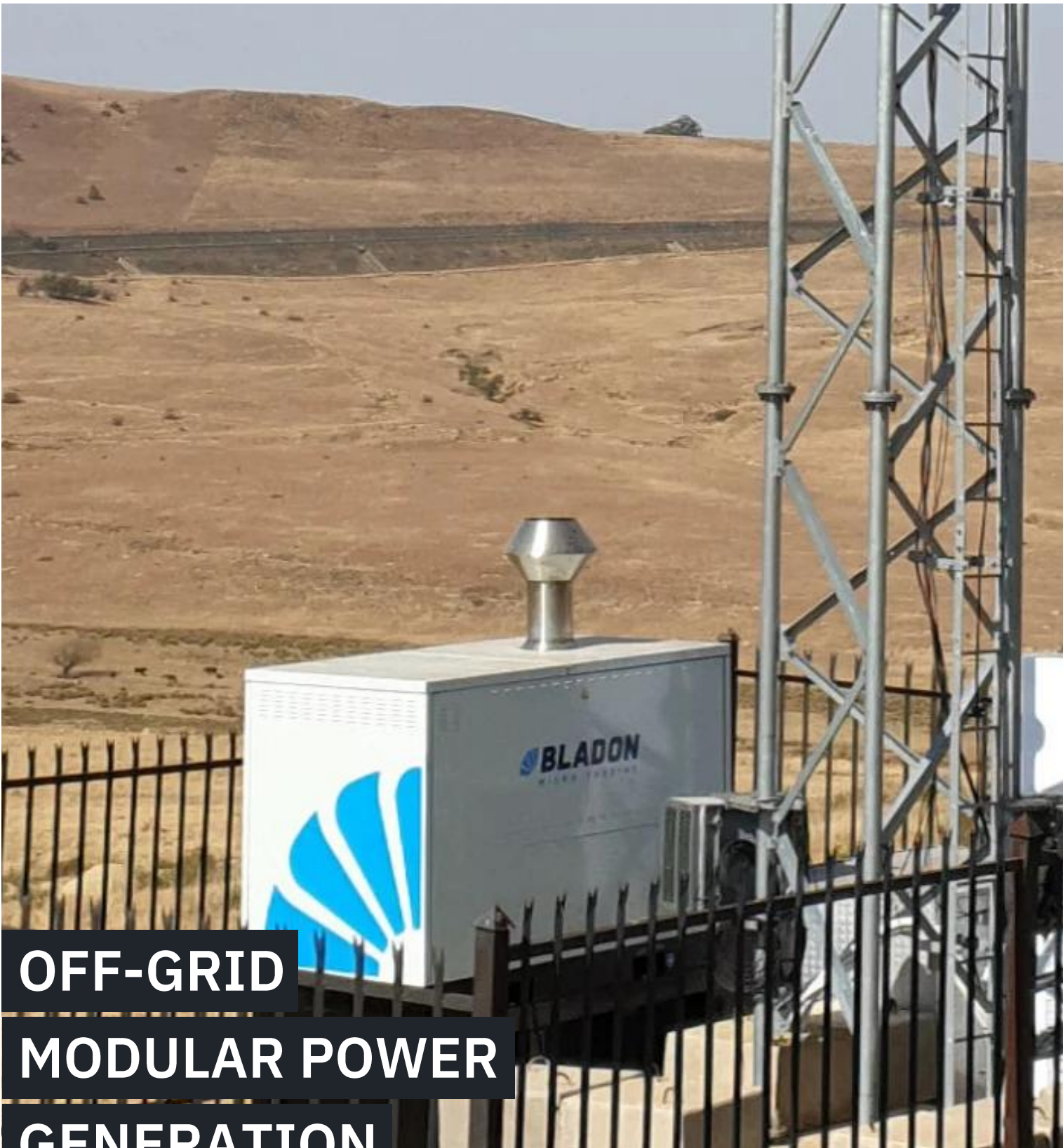
Panel weight: 30 kg (full panel 2.8m) XL: 36 kg / panel
 20 kg (full panel 2.0m) XL: 25.7 kg / panel
 15 kg (half panel 1.4m) XL: 18 kg / panel
 10 kg (half panel 1.0m) XL: 12.85 kg / panel

Operating Parameters:

- Inert and non-conductive
- Resistant to solvents
- Non-corroding
- Resistant to UV damage
- XHD: UL 94 HB fire rating
- XHD-XL: British Standard BS476 non-combustible
- Resistivity 10 ohms S
- Single component system

Suitable Surfaces: Turf, Grass, Sand, and Graded Ground - optimal surfaces to be level and supporting*

*Ground dependant



**OFF-GRID
MODULAR POWER
GENERATION**

BE POWERED BUT NOT HEARD

The Bladon MTG uses proven technology to simply deliver practical primary power without the noise, high operating costs and pollutants of a conventional diesel genset.

With the introduction of the upgraded Bladon MTP40, we now offer even more choice for creating the clean, quiet power generation output you need:

- High autonomy - uninterrupted running on one annual service.
- Low heat signature/emissions.
- Flexible fuelling – including diesel, kerosene, paraffins and low carbon HVOs
- Cleaner power – HVOs emits 97% less CO₂, 33% less NO_x, 97% less particulates, with no engine oil or liquid coolant to dispose of.
- Easy to transport (800kg).
- Lowers monthly operating expenses and total cost of ownership compared to traditional diesel gensets, hybrid diesel gensets or fuel cells, especially for off grid and bad grid site applications.

Bladon MTGs can also be linked together in series to create the power output you need

BLADON MTP40

40kVA power output



BLADON MTG12TL

15kVA power output



FEATURES + BENEFITS

1

Reliable and durable

The benchmark for genset reliability and depended upon by telecoms networks globally since 2017.

2

Sustainable

EU Stage V compliant and lowers your operation's emissions and carbon footprint.

3

Versatile

Use and/or mix any fuel you have to ease the burden on supply, reduce costs and lower the risk of fuel theft.

4

Discrete

Minimises the noise of your operations (less than 60dB(A) at 7m) without reducing your power output.

5

Lower cost of ownership

Monitor and manage the MTG remotely, wherever you have an internet connection. You can even integrate the system with your own site management platforms.

6

Ongoing support and service

Comes with a 12-month, 8,670 hours parts and labour warranty as standard. Needs only one annual service. Training is also available.

7

Longer lifespan

95% fewer maintenance visits when compared with standard diesel generators.



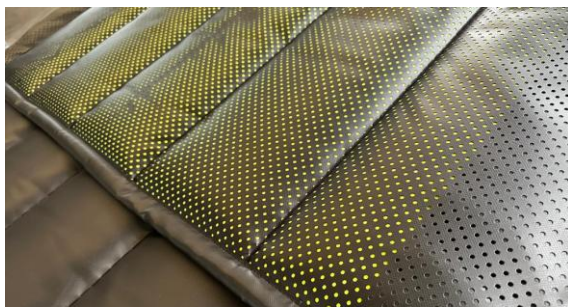
**THERMAL, ACOUSTIC
+ FRAGMENTATION BARRIER
PANEL SOLUTIONS**

ESSENTIAL PROTECTION FOR EQUIPMENT AND PERSONNEL



Comprehensive range of sustainable thermal suppression and protection barrier panel systems for the toughest military challenges and hostile environments.

Our tried and tested modular manufacturing process creates the protection you need at an affordable price.

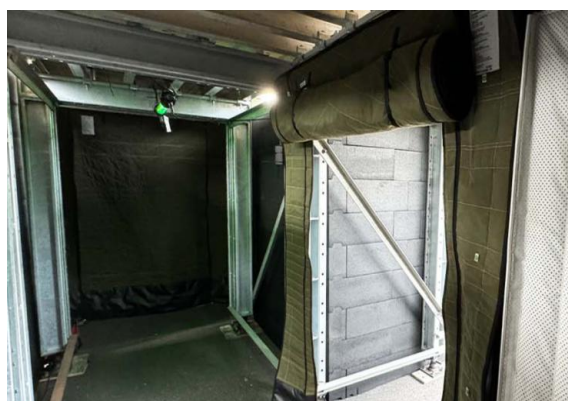


Designed to deliver consistent performance over a long-life. The panels are weather proofed, moisture resistant and built to last. Barrier composites are fire-retardant and come with built-in protection from water, condensation and UV. Patented jointing system ensures the best acoustic seal between barriers.



Our modular approach allows you to design the system and incorporate the level of protection you need for your operation.

Advanced IR fabric allows for thermal and acoustic signature management in any environment to help keep your personnel and equipment safe.



Trusted ballistic and explosive fragmentation barriers can be integrated for higher levels of protection:

Our panels are UL 752 Level 8 certified to stop bullets in their tracks (equal to NIJ 0108.01 Level III requirements).

*Products developed to meet specification requirements may need additional testing and accreditation.

FEATURES + BENEFITS



Affordable

Modular manufacturing process developed over many years to create the protection you need efficiently, at an affordable price. Barriers customised for your specific requirements, meaning you only pay for the protection you need.

Man-handlable

Scalable design to simplify portability, storage and transport, and can be quickly set up and taken down without specialist skills.

Fire retardant, weather-proofed and moisture resistant

The resilience and consistent performance you need to be confident your operations won't be disrupted.

Integral condensation, vapour, radiant and smoke barrier

Trust our barriers to mitigate many of your emissions.

Complete control

Customise the sound and fragmentation protection to match the risk of the environment you're operating in.

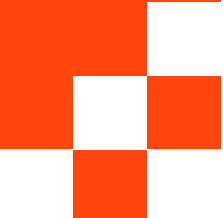
Operational or base labelling / signing

Our barriers can carry your branding or the name of the project.



OUR SUPPORT AND PROPOSAL

SOLUTIONS
MILITARY + HUMANITARIAN



OUR SUPPORT

To successfully provide global sustainment and operations support to armed forces and civilian government agencies, NOBLE must supply its clients with mission-critical products and services at the right time, and at the right price.

WHY THE BOX GROUP?

We've applied over ten years of experience within the event and constructions sectors to develop a range of sustainable barrier panel solutions for the toughest military challenges.

Systems which can cope with most demanding tasks and deployed locations at an affordable cost.



The Box Group has experience of working with military forces around the world to create safe and effective operational spaces in the most demanding remote and hostile environments.

We have applied this experience to create a coherent package of infrastructure systems to support your current and future operational requirements.

Our products include military-grade overlay flooring and trackway, flexible power from our autonomous micro turbine generators and demountable barriers for sound and heat suppression; explosive fragmentation protection.

In this age of modern drone and heat signature weaponry, even the smallest fragments with low kinetic energy can cause considerable damage. Our fragmentation panels provide scalable, demountable, relocatable, and reusable protection against these threats.

Our panels can be customised in length/height and a variety of materials can be incorporated within the composite to enhance performance.

Whatever your operating and logistic requirements, wherever in the world you need to be, our demountable barrier and panel systems protect your personnel and assets.

A WINTER MILITARY CHALLENGE

Keeping ground troops warm is mission-critical, plus, as drone weaponry advances, better forms of camouflage, deception and protection are needed to maintain a tactical advantage.

During the winter months, temperatures in some locations can drop well below freezing for weeks at a time. It's crucial to ensure your troops on the ground stay fully functional and alert by providing them with suitable insulation and protection from the wind.

Every soldier and every piece of military equipment on the ground is constantly interacting with radiation from within the electromagnetic spectrum. Light waves bouncing off the surface of an object form an image in our eyes, or which can be captured by a camera, while reflected waves within the infrared band can be detected by dedicated sensors and films.

Objects may generate, emit and absorb heat radiation in a way that can be detected by thermal imaging sensors, while radar waves are reflected off surfaces in distinctive patterns. Together this

emitted, reflected and absorbed radiation creates an object's electromagnetic signature. Enemy forces can use these signatures to remotely identify objects, assess their level of threat, and take action to neutralise them.

Successfully managing your soldiers' heat signature during conflict can give you the military advantage needed to complete your mission. By changing a soldier's signature in a way that helps them blend in with their environment so they can't be identified as a threat not only increases your operational success, but ultimately soldiers' safety and survival in the most challenging environments.

KEY CHALLENGES:

- Keeping soldiers warm, especially during the winter months
- Protecting troops from thermal imaging sensors
- Provide sustainable, easy to use, reusable methods of shelter and protection

OUR SUPPORT AND PROPOSAL

PROPOSED PRODUCTS TO USE

The Box Group have thoroughly researched and sourced the most suitable solutions on the market so you can provide the ultimate level of warmth and protection for your soldiers.

Tabs PROTHERM

Thermal resistance, acoustic insulation and absorption barriers

- Fully demountable and reusable.
- Patented jointing system to ensure the best acoustic seal between barriers.
- Integral condensation, vapour, radiant and smoke barriers



Tabs CoBRA

Scalable, movable blast fragmentation barriers

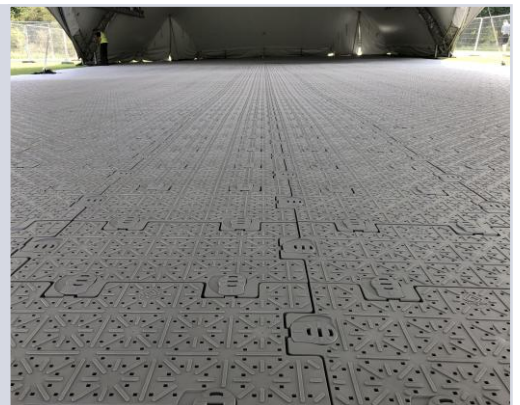
- Top-tier protection against explosive fragmentation impacts.
- Manufactured using certified and documented Aramid based technical fabrics to boost performance.
- RF EMI shielding mesh fabric 92 dB @ 0.2 to 2 GHz.



Stadia X / Stadia X-lite / Stadia XHD

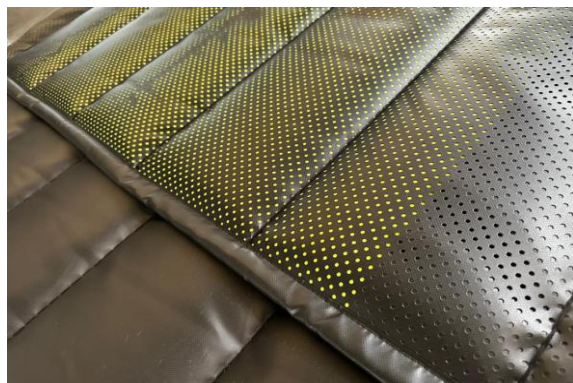
Multi-use temporary flooring suitable for many applications including military tent flooring, walkways and temporary roads

- Durable and flexible, creating a firm surface.
- Ventilated to allow light, air and water to penetrate through.
- Supports vehicles up to 2,500kg* (12.5 tonnes Stadia XHD) and far greater static loads.



Tabs PROTHERM

Tabs PROTHERM thermal, acoustic composite barriers are lightweight, scalable, and provide top-tier protection for your front-line forces.



Customisable, scalable protection within a portable, demountable system, built for rough handling in challenging environments

Designed to shield from a variety of threats, Tabs PROTHERM outperforms all existing barriers in every department. Specialist chain stitched composite maintains a consistent 50mm slab depth through stitch technology.

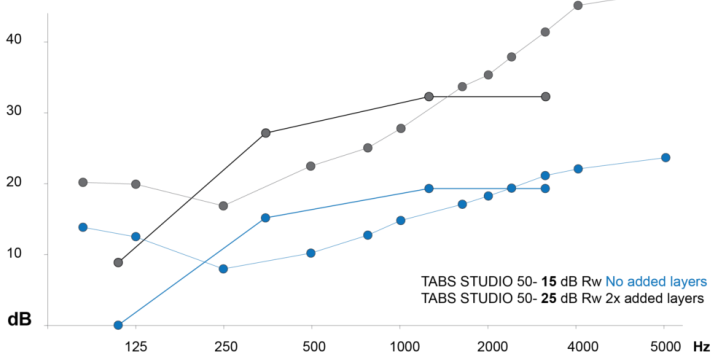
This innovative CNC precision-machined barrier is unique in that additional layers and materials can be incorporated to point load performance. This means thermal resistance, absorption and acoustic insulation can be enhanced to match a specific issue or customised to individual requirements. The composite barrier is fully demountable and reusable. In addition to excellent thermal and acoustic characteristics Tabs PROTHERM also combines an integral condensation, vapour, radiant and smoke barrier.

- Resilient strong surfaces and heavy-duty industrial construction help keep soldiers warm and protect them from
- FR Polyester fibrous core
- Hydrophobic core and high strength velcro ensure performance is not compromised with moisture or age
- Choice of colours including industrial black, NATO Green and camouflage surface finish plus branding available
- Range of backing options
- Barriers can be installed vertically, horizontally or on a pitch
- Machine finished roll ends
- All materials are UK/EU origin
- Patented Keder connection fixings on all thermal barriers

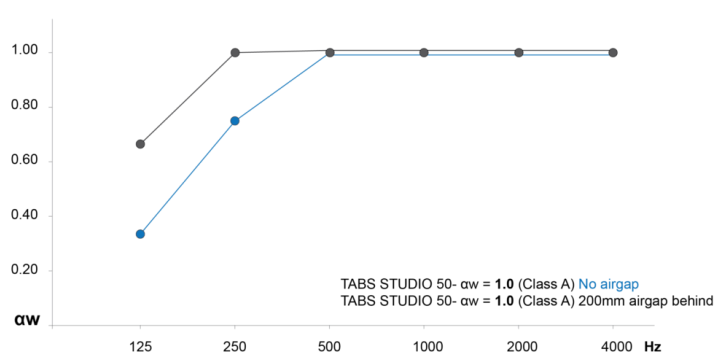
Tabs PROTHERM

Dimensions	1.220 mm x UNLIMITED mm x 50mm
Weight	1.83 Kgm2 STANDARD 3.83 Kgm2 2x GLASS LAYERS 4.83 Kgm2 3x GLASS LAYERS
R Value	1.55 m2K/W
Performance	<p>Class A sound absorption $\alpha_w = 1.0$ (UNI EN ISO 354:2003) $\alpha_w = 1.0$ (BS EN ISO 11654:1997)</p> <p>SRI 15 dB Rw (UNI EN ISO 10140-2:2021) SRI 27 dB Rw (UNI EN ISO 10140-2:2021)</p> <p>with 3x internal layers of laminated glass cloth Density 22.84 kg/m3 Thermal Resistance 1.55 m2K/W (UNI EN ISO 12667:2002) Thermal conductivity 0.045 W/mK (UNI EN ISO 12667:2002) B-s1,d0 Fire performance (BS EN 13501-1:2018) (2) B-s1,d0 Fire performance (UNI EN 13823:2020) (3) B-s1,d0 Fire performance</p>

SOUND REDUCTION INDEX (R) BS EN ISO 10140-2:2010



SOUND ABSORPTION COEFFICIENT BS EN ISO 354:2003



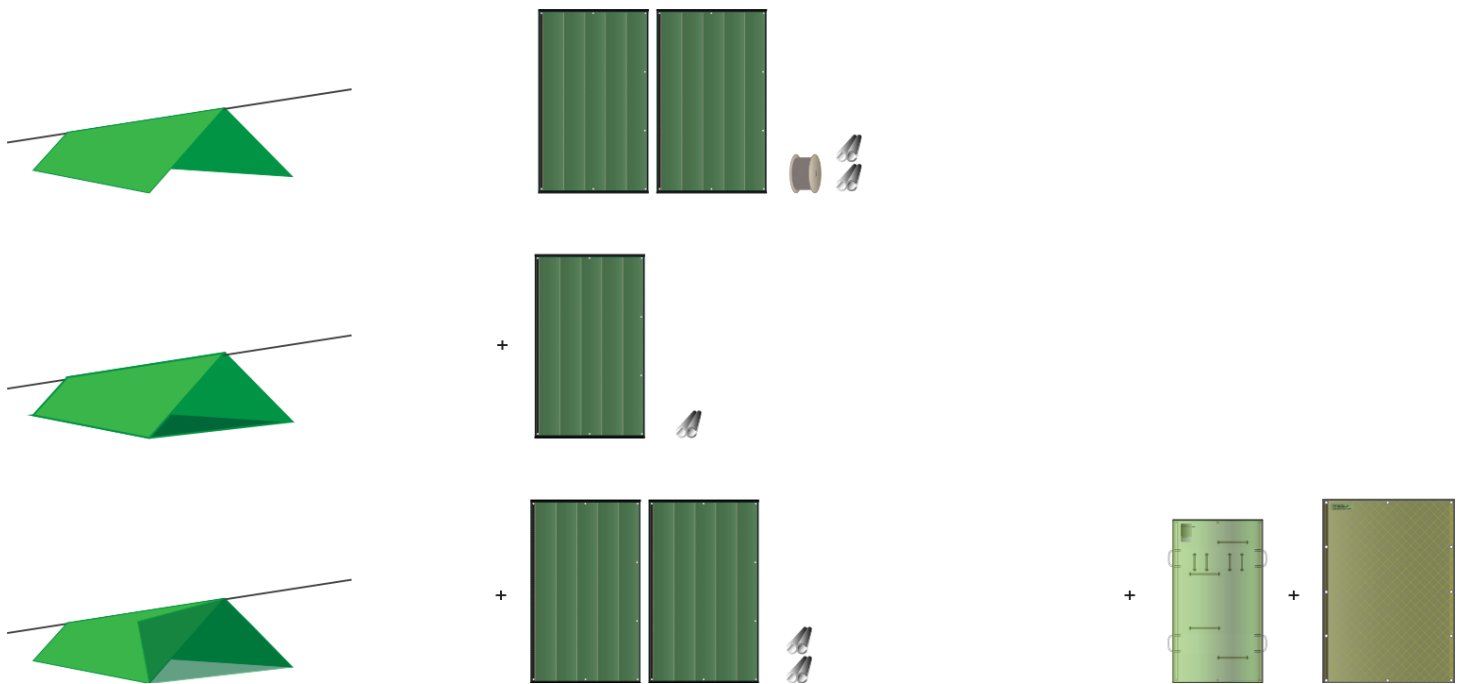
MILITARY INSULATION PANEL KITS – OPTION 1



Tab's PROTHERM thermal barriers offers total flexibility and functionality through versatile, scalable design. Combine with the optional extra, Tab's CoBRA for the ultimate level of threat protection.

OPTION 1

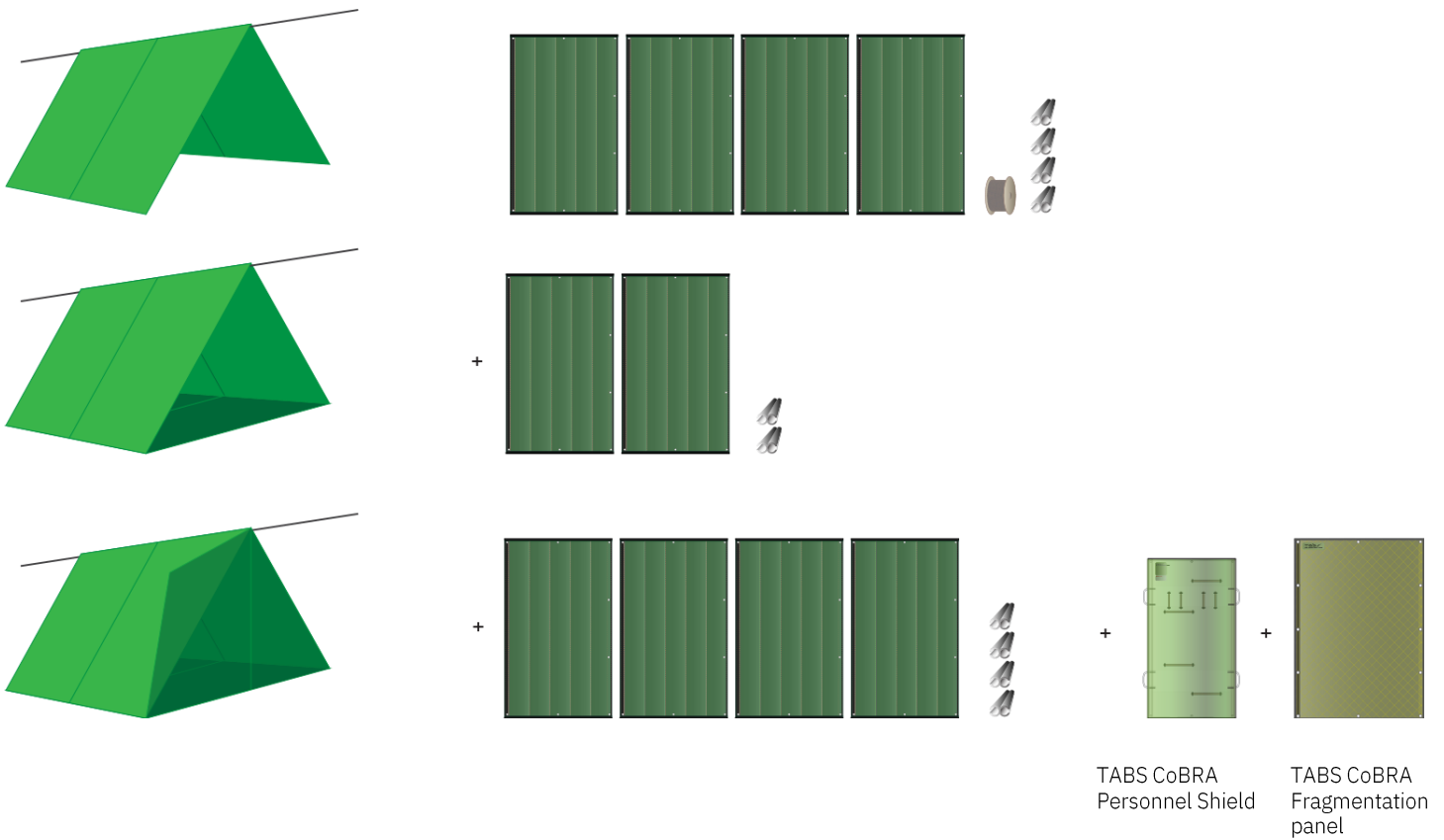
2-5 PIECE THERMAL KIT + FIXINGS + ADDITIONAL CoBRA FRAGMENTATION PROTECTION



MILITARY INSULATION PANEL KITS – OPTION 2



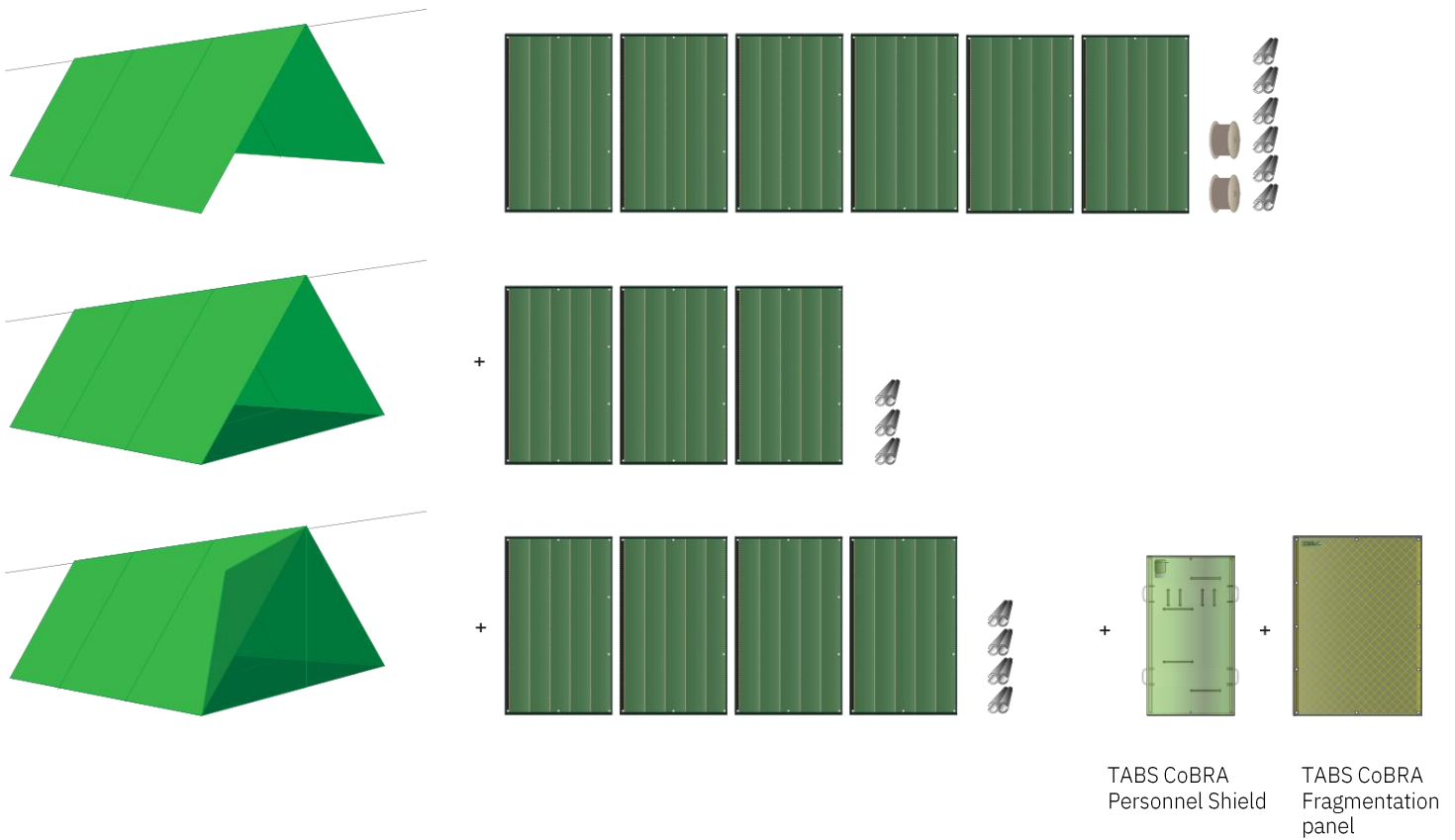
4-10 PIECE THERMAL KIT + FIXINGS + ADDITIONAL CoBRA FRAGMENTATION PROTECTION



MILITARY INSULATION PANEL KITS – OPTION 3



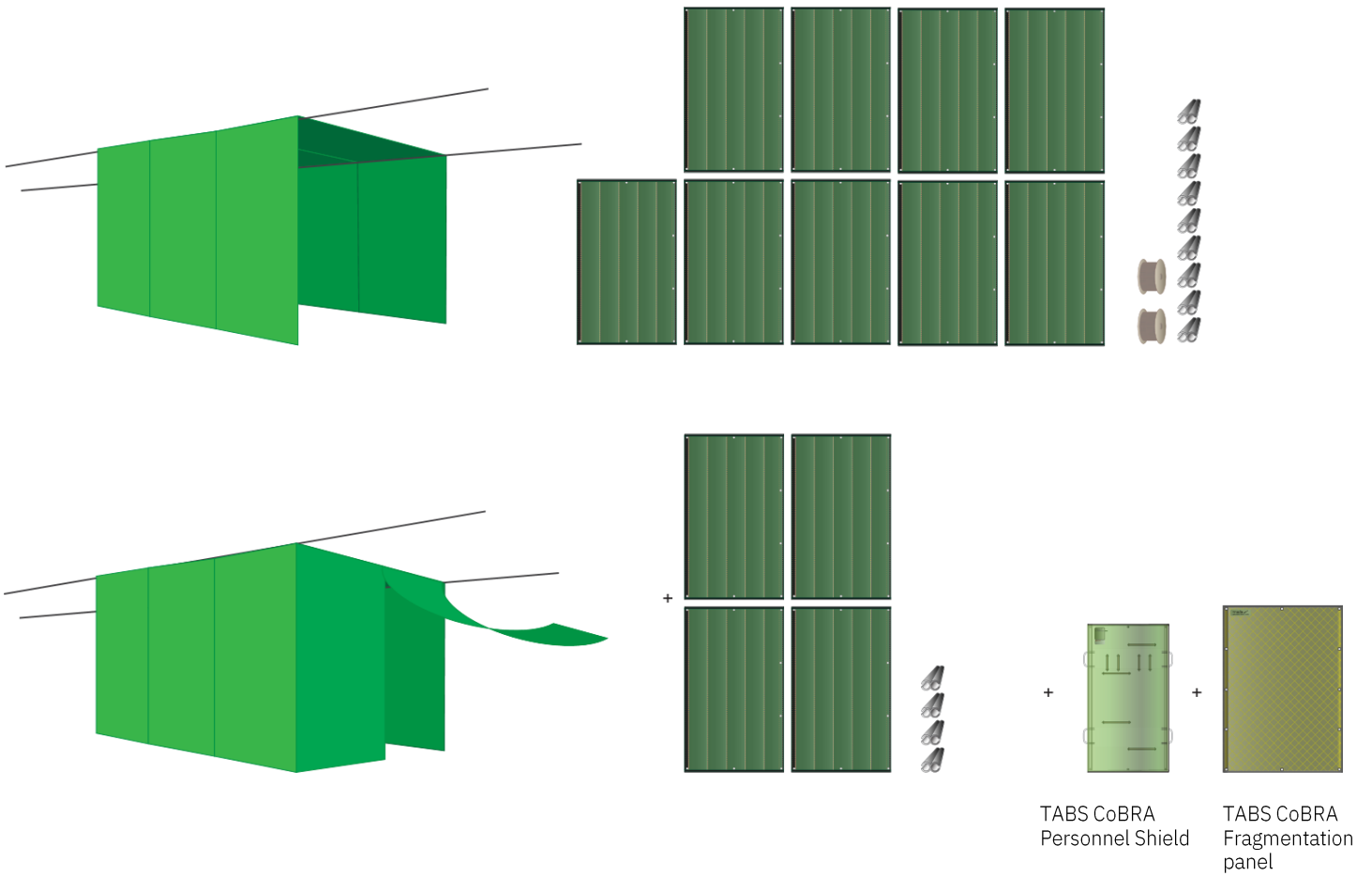
6-13 PIECE THERMAL KIT + FIXINGS + ADDITIONAL CoBRA FRAGMENTATION PROTECTION



MILITARY INSULATION PANEL KITS – OPTION 4



9-13 PIECE THERMAL KIT + FIXINGS + ADDITIONAL CoBRA FRAGMENTATION PROTECTION



Tabs CoBRA

TABS CoBRA ballistic /blast fragmentation panels are lightweight, scalable, and provide top-tier protection against explosive fragmentation impacts.



Scalable, movable blast barriers creating safe zones on demand

Designed to shield from a variety of threats, the CoBRA panels are manufactured using certified and documented Aramid based technical fabrics. CoBRA panels offer durable defence against multiple threats.

The panels primary purpose is to suppress the blast fragmentation from an explosion. They are tested to (ENAC) AEP 2920:2015 Ed.A vs 2:2016. When assembled, they achieve a ballistic performance consistent with the NIJ Standard 0108.01 Level III-A.

TABS CoBRA panels offer strategic protection for high-value assets (HVAs), they also provide Personal Protective Equipment (PPE) options designed for the extreme hazards faced by, including military personnel, emergency responders, and law enforcement officers.

In this age of modern weaponry, even the smallest fragments with low kinetic energy can cause considerable damage. TABS CoBRA panels provide scalable, demountable, relocatable, and reusable protection against these threats.

CoBRA panels can be customised in length/height and a variety of materials can be incorporated within the composite to enhance performance.

- Quantity of Aramid layers to boost performance
- UD materials to boost ballistic performance
- Foams and insulation layers
- RF EMI shielding mesh fabric 92 dB @ 0.2 to 2 GHz
- Specialist fixings

Patent pending, including European Patent Application no. 23187339.9

Tab's CoBRA PERSONEL SHEILD

Designed to protect a human body and high value assets from damage by firearms, explosive fragmentation and associated debris.

FEATURES AND BENEFITS

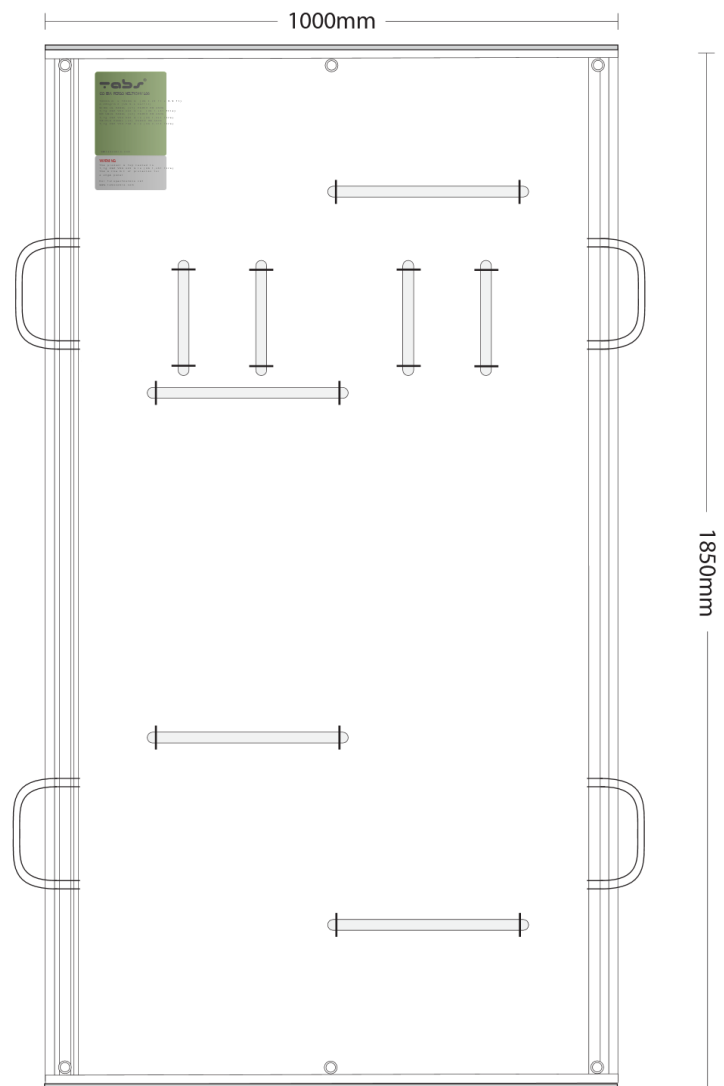
- Can be used as a mattress, providing insulated comfort
- No heat signature due to thermal insulation layer - hides potential targets
- MIL-SPEC Polypropylene 600gsm FR External surfaces
- Abrasion- 80,000 Martindale cycles
- Laminated with Carbon fibre felt and PVC
- 1670 DTEX ARAMID (x8) 400gsm (UNI EN 12127)
- Waterproof resin treatment to Aramid layers
- Zero Down insulation layer
- Straps to allow barrier to be worn
- Loop straps to use as a breaching shield
- Straps to create an evacuation stretcher
- Attached groundsheet (rear face)-
- Totally waterproof
- Ability to climb/hide inside barrier
- Ability to combine barriers to create a wall/barrier
- Shield combine in all directions using Velcro and Keder
- Can be used in vehicles
- Protects when moving through open terrain
- Automated manufacture processes
- High capacity
- Immediate lead times

UPGRADES

- Additional aramid layers increase v50 performance
- Additional insulation increases R value

UD Fabric layers

- Faraday fabric layer
- FR outer material creates 30 mins fire barrier
- NIR compliant fabric layer
- Additional camouflage



Specifications are not warranted and are subject to change without notice. The Box Group and all persons acting on its behalf disclaim any and all liability for any errors, inaccuracies or incompleteness contained in any datasheet or in any other disclosure relating to any product.

Other company product names may be trademarks or service marks of others.

Tabs CoBRA T1541WR/L08

Dimensions	1.450 mm x 2.050 mm x 10 mm STANDARD PANEL 1.450 mm x UNLIMITED mm x 10 mm
Performance - T1541WR/L08	STANAG 2920 (ENAC) AEP 2920:2015 ED.A VS 2:2016 V50 1.1g 442.3 m/s (1,451 ft/s) 4.28 kgm ² (9.4 lbsft ²) 12.5kg STANDARD PANEL (27.5 lbs)
Performance - T1541WR/L16 (2x PANELS)	STANAG 2920 (ENAC) AEP 2920:2015 ED.A VS 2:2016 V50 1.1g 593 m/s, (1,946 ft/s) 8.56 kgm ² (15.5 lbsft ²) 25.1 kg STANDARD PANEL (55.3 lbs)
Performance - T1541WRIL24 (3x PANELS)	STANAG 2920 (ENAC) AEP 2920:2015 ED.AVS 2:2016 V50 1.1g 706.4 m/s (2,318 ft/s) 12.84 kgm ² (26.8 lbsft ²) 37.5 kg STANDARD PANEL (82.7 lbs)
Performance - T1541WR/L32 (4x PANELS)	STANAG 2920 (IENAC) AEP 2920:2015 ED.A VS 2:2016 V50 1.1g 798.4 m/s (2,619 ft/s) 4.28 kgm ² (9.4 lbsft ²) 12.5 kg STANDARD PANEL (27.5 lbs)
Certificates	<p>CLASS C SOUND ABSORPTION aw = 0.5 (UNI EN ISO 354:2003}</p> <p>SRI 27 dB Rw 8x Aramid layers {UNI EN ISO 10140-2:2021}</p> <p>THERMAL RESISTANCE 1.55 m²K/W {UNI EN ISO 12667:2002}</p> <p>THERMAL CONDUCTIVITY 0.045 W/mK {UNI EN ISO 12667:2002}</p> <p>B-s1,d0 FIRE PERFORMANCE {BS EN ISO 13501-1:2018}</p> <p>B-s1,d0 FIRE PERFORMANCE {UNI EN ISO 13823:2020}</p>

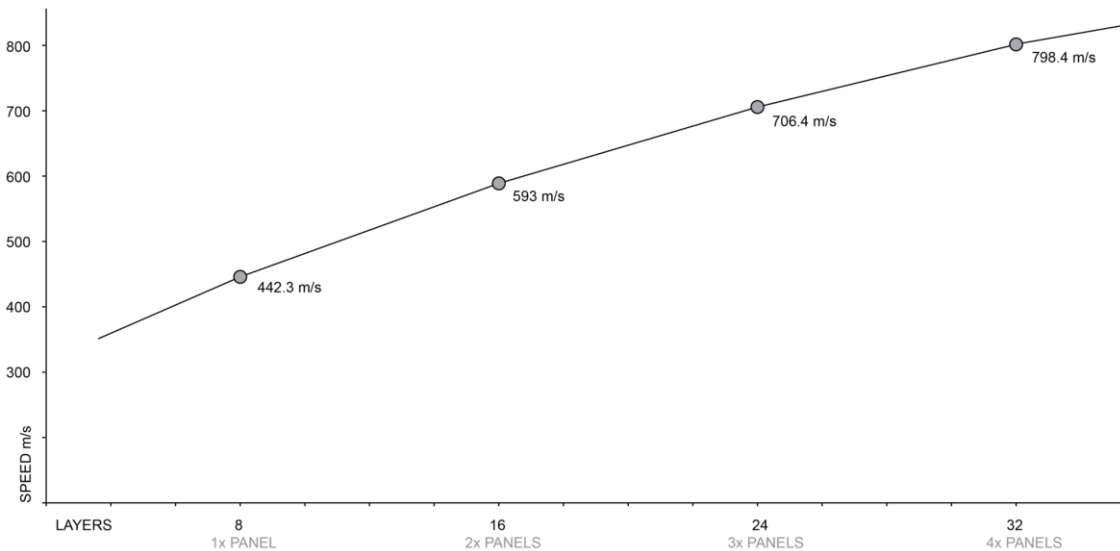
Tabs CoBRA T1541WR/L08

External surfaces	600gsm MIL-SPEC 100% POLYPROPYLENE F.R. ABRASION - 80,000 MARTINDALE CYCLES FASTNESS TO RUBBING WET 4/5, DRY 4/5 {EN ISO 105-X12} LAMINATED WITH CARBON FIBRE FELT AND PVC
--------------------------	----------------------------------------------------------------------------------------------------------------------------------------------------------------------------------------

Internal layers	1670 DTEX ARAMID YARN 400gsm {UNI EN 12127} 150cm (UNI EN 1773) WATERPROOF RESIN TREATMENT KEVLAR THREAD QUILTING INDUSTRIAL VELCRO CONNECTION SYSTEM INDUSTRIAL MIL-SPEC BLACK INNER SURFACE INDUSTRIAL MIL-SPEC GREEN OUTER SURFACE CAMOUFLAGE AND COLOURS AVAILABLE RANGE OF INTERNAL LAYER OPTIONS FIXINGS, STRAPS, CONNECTIONS, PER REQUIREMENT HIGHEST QUALITY PERFORMANCE MATERIALS ALL MATERIALS ARE EU/UK ORIGIN HEIGHT/LENGTH IS SCALABLE - ANY LENGTH POSSIBLE SPECIFIC WIDTHS CAN BE MADE FOR LARGE ORDERS DEMOUNTABLE, RESUSABLE, RESILIENT
------------------------	--------------------------------------------------------------------------------------------------------------------------------------------------------------------------------------------------------------------------------------------------------------------------------------------------------------------------------------------------------------------------------------------------------------------------------------------------------------------------------------------------------------------------------------------------------------------------------------------------------------------

Tab® CoBRA- T1541-WR
 FRAGMENTATION / BALLISTIC PANEL
 STANAG 2920 (ENAC) AEP 2920:2015 EDA VS 2:2016
 V50 17G

AUTOMATED MANUFACTURE PROCESSES
 HIGH CAPACITY
 IMMEDIATE LEADTIMES



Specifications are not warranted and are subject to change without notice. The Box Group and all persons acting on its behalf disclaim any and all liability for any errors, inaccuracies or incompleteness contained in any datasheet or in any other disclosure relating to any product.

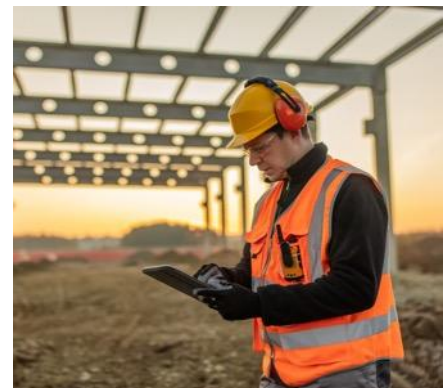
Other company product names may be trademarks or service marks of others.



PROJECT MANAGEMENT + CONSULTANCY

PREPARATION IS EVERYTHING

- Temporary operating environments can throw up a wide variety of conditions. Many of them challenging. Some of them life-threatening. Proper planning and project management mitigates your risks.
- Our solutions combine our experience with inventive thinking and a can do, positive mindset – to meet logistical challenges, enable operations and successfully complete missions.
- We offer a comprehensive range of ‘military grade’ infrastructure solutions developed to perform under the most challenging conditions.
- We deliver the core foundations for the environment you are working in. Tough overlay for any purpose and any load, reliable autonomous and sustainable power generation along with protective barriers to control your sound and thermal environment with the option to add fragmentation protection to keep your assets safe.
- Our solutions are about much more than the provision of the right kit: they combine with our experience, our inventive thinking and can-do mindset to mitigate risk, overcome logistical challenges so you can focus on completing your project.
- The Box Group is the reliable partner you need when there’s zero-room for error.
- We work closely together with you and our strategic partners to deliver practical, reliable and high-quality solutions. We are by your side from day one.



Any Challenge. Anywhere



MILITARY GRADE SOLUTIONS.

MILITARY PRECISION SERVICE.

WE STAND SHOULDERS TO SHOULDERS

Trust our team to support your objectives and back you all the way. We are:



GROUNDING

Our wide-ranging experience and pragmatic approach mean that we always consider the practicalities required to deliver incredible spaces. We build solid foundations from the start.



RESILIENT

Every installation presents challenges. When we encounter obstacles, we think with a positive 'can do' mindset and find ways to overcome them. We don't give up.



INVENTIVE

We thrive on 'one-off' or unusual scenarios where there may be no known precedent. That's when we adapt our thinking, products and our mindset to deliver a truly innovative solution. We find a way.



DEPENDABLE

We know that we'll only earn your trust if we deliver on our promises, so we go further to deliver what you need every single day, no matter how demanding the challenge. We won't let you down.



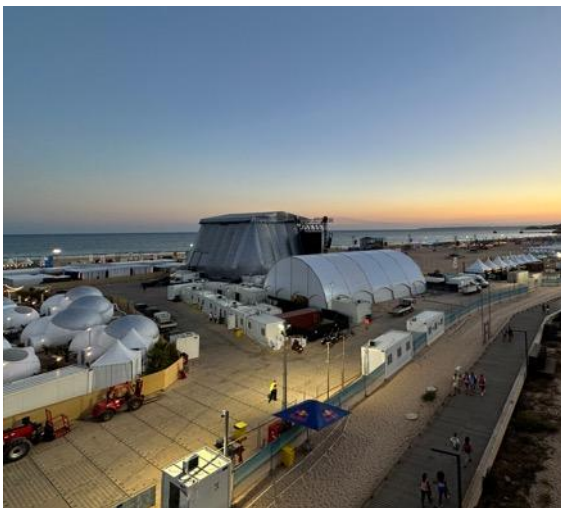
ACCREDITATIONS

+ PARTNERS

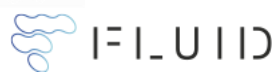
TRIED & TESTED ON CONSTRUCTION SITES WORLDWIDE



- Our solutions cover the globe. Our experience spans over two decades.
- In the most challenging conditions and testing timescales, when there's no room for error, our clients trust us to think and deliver.
- We are ISO 9001 Quality Management certified
- We work on the ground with:



LOSBERGER DE BOER





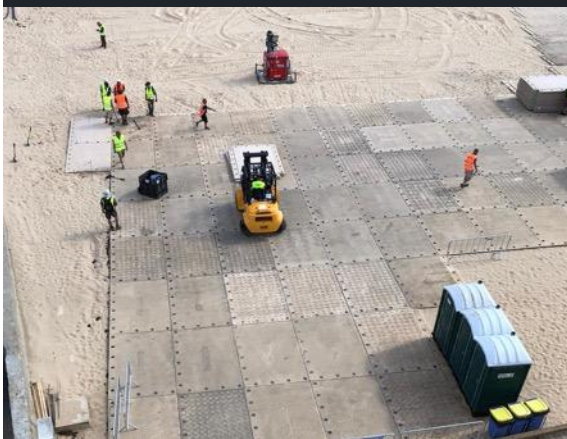
PROJECTS DELIVERED

BUILDING A **WORLD CLASS** EVENT ON SHIFTING SANDS

CLIENT:

Event Horizon/Afro Nation 2023

LOCATION: Rolling Loud and Afro Nation 2023 are Europe’s largest music beach festivals, bringing top-tier artists – and 120,000 people – to Portimao in the south of Portugal each year.



IN A NUTSHELL:

- Equipment used: I-Track, SignaRoad
- Vehicles: 26 trucks, 2 forklifts (UK and Portugal)
- Distance travelled: 1560 miles UK to Portimao
- Installation time: 6 days
- Pack-up time: beach cleared and returned to civic authority in 5 days
- Size of team: 19 people from Box Group and partner organisations.

THE CHALLENGE

Holding the festivals involves transforming a sandy beach into a fully functional, world-class event venue with stages, sound systems, lighting rigs and catering outlets.

Sand isn't a stable surface: it shifts under the pressure of weight and can be blown away by wind. The success of the festival depended on having exactly the right foundations in place.

The festival organisers had had a bad experience with flooring in 2022 so our team worked closely with them to understand their needs and reassure them that our solution would work for them.

OUR SOLUTION

We meticulously negotiated with equipment suppliers, planned transport logistics and co-ordinated operational schedules between our UK and European teams, including the complex management of CMRs and post-Brexit Carnets.

In total we sourced, transported and laid 14,500m2 of flooring – equivalent to twice the area of Wembley Stadium – and our trackway had to cope with a wide range of vehicles including fully loaded articulated lorries and a 120-tonne crane to assemble the stage and entrance gate.

Once on-site, speed was of the essence. By planning thoroughly, working 24hrs when needed and investing time in training local teams in Portugal, we were able to unload our trucks and install the equipment safely, efficiently and to schedule.



John Davy
CEO
+44(0)7798 567041
john.davy@theboxgrp.com



Ben Hodson
Business Development Director
+44(0)7824 886180
ben.hodson@theboxgrp.com



Will Leuchars
Business Development Associate
+44(0)7748 960398
will.leuchars@theboxgrp.com



The
Box
Group

THANK YOU

When the outcome of your mission or operation hinges on having dependable temporary structures in place, fast.

We're here for you.

The Box Group
17-19 ST Georges Street
Norwich
NR3 1AB

T: +44 (0)203 286 7463

E: contact@theboxgrp.com

